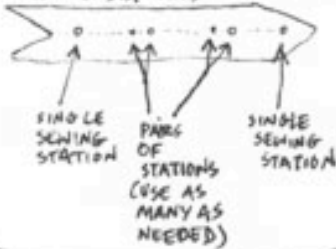


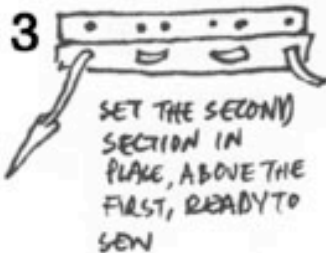
multi-section unsupported binding

1 PREPARE YOUR SECTIONS:

SEWING STATIONS



2 START BY GOING INTO THE FIRST SECTION & SEWING IT SEPARATELY AS FOLLOWS:

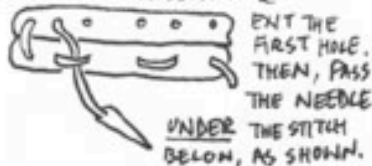


SET THE SECOND SECTION IN PLACE, ABOVE THE FIRST, READY TO SEW

4 NOW GO UP TO THE SEWING STATION IMMEDIATELY ABOVE



5 PROCEED ALONG THE INSIDE OF THE NEW SECTION &



ENTER THE FIRST HOLE. THEN, PASS THE NEEDLE UNDER THE STITCH BELOW, AS SHOWN.

THEN PROCEED TO THE NEXT HOLE, DOING THE SAME WITH THE NEXT PAIR.

6 YOU'LL END UP WITH STITCHING LIKE THIS. ALL YOU ARE DOING IS PASSING UNDER THE PREVIOUS STITCHES BEFORE YOU MOVE ON.



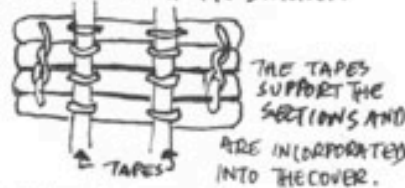
WHEN YOU REACH THE END, TIGHTEN UP THE SEWING AND TIE A KNOT USING THE END THAT YOU LEFT PROTRUDING FROM THE FIRST HOLE.

7 DO THE SAME THING WITH THE ENSUING SECTIONS, CATCHING UNDER THE STITCHES OF THE SECTIONS IMMEDIATELY BELOW. TIGHTEN AS YOU GO.



WHEN YOU GET TO THE SINGLE STITCHES AT THE HEAD & TAIL OF THE BOOK, PASS THE NEEDLE BETWEEN THE SECTIONS TO MAKE THE LINK. WHEN YOU GET TO THE FINAL SECTION, TIE A KNOT AT THIS POINT.

* WHEN SEWING A HEAVY BOOK OR ONE COMPOSED OF MANY SECTIONS, THE 'PAIRED' STITCHES ARE NOT CAUGHT AS IN THIS SEWING, BUT ARE SUPPORTED BY A TAPE THAT RUNS BENEATH THE STITCHES.



YOU CAN BUY TAPE ESPECIALLY FOR THE PURPOSE, OR USE ANY TOUGH RIBBON MATERIAL THAT WON'T FRAY. YOU CAN EVEN USE FOLDED PAPER "TAPES"

* WHEN YOU'VE COMPLETED THE * SEWING, IT'S A GOOD IDEA TO REINFORCE THE SPINE WITH A PIECE OF FABRIC OR PAPER.



FIRST, APPLY GLUE TO THE SPINE WITH THE 'POUNCING' MOTION YOU USED TO GLUE COVERS.

THEN, APPLY THE REINFORCING FABRIC YOU'VE CHOSEN.



RUB IT ONTO THE SPINE USING YOUR BONE FOLDER.

WHEN IT'S STUCK ON, TRIM THE PROTRUDING PARTS OF THE FABRIC TO 45° ANGLES AND GLUE THEM, AS SHOWN, ONE AT A TIME.



NOTE THE CUT OUT "FABRIC ANGLE"



GLUE & FOLD UP.



RUB ONTO BOOKBLOCK WITH BONE FOLDER.

• THEN REPEAT FOR THE OTHER SIDE. THERE IS ALSO A SELF-ADHESIVE TAPE YOU CAN USE FOR THE PURPOSE.

d

e

b

a



The catching stitches you make should look something like the above. 'x' is the first sewn, 'd' is the last in this case. The important thing is just to catch under the stitch below.